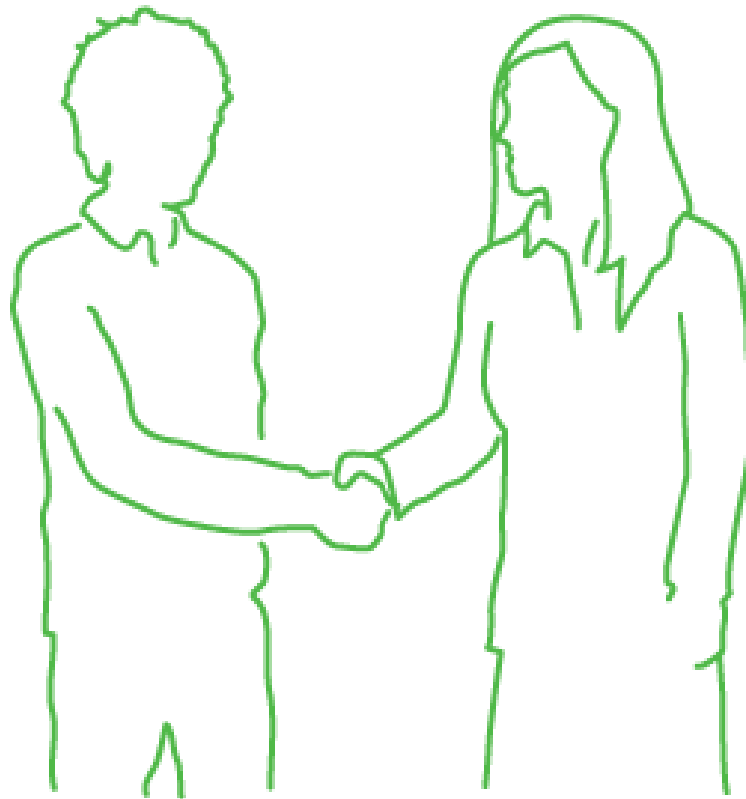


relationship media

our evolved approach to
communication planning

At Maxus, we build deeper relationships between consumers and brands, creating, executing and quantifying communication that drives greater business value



We understand the evolution of choice



We have moved
from a time of
Limited choice



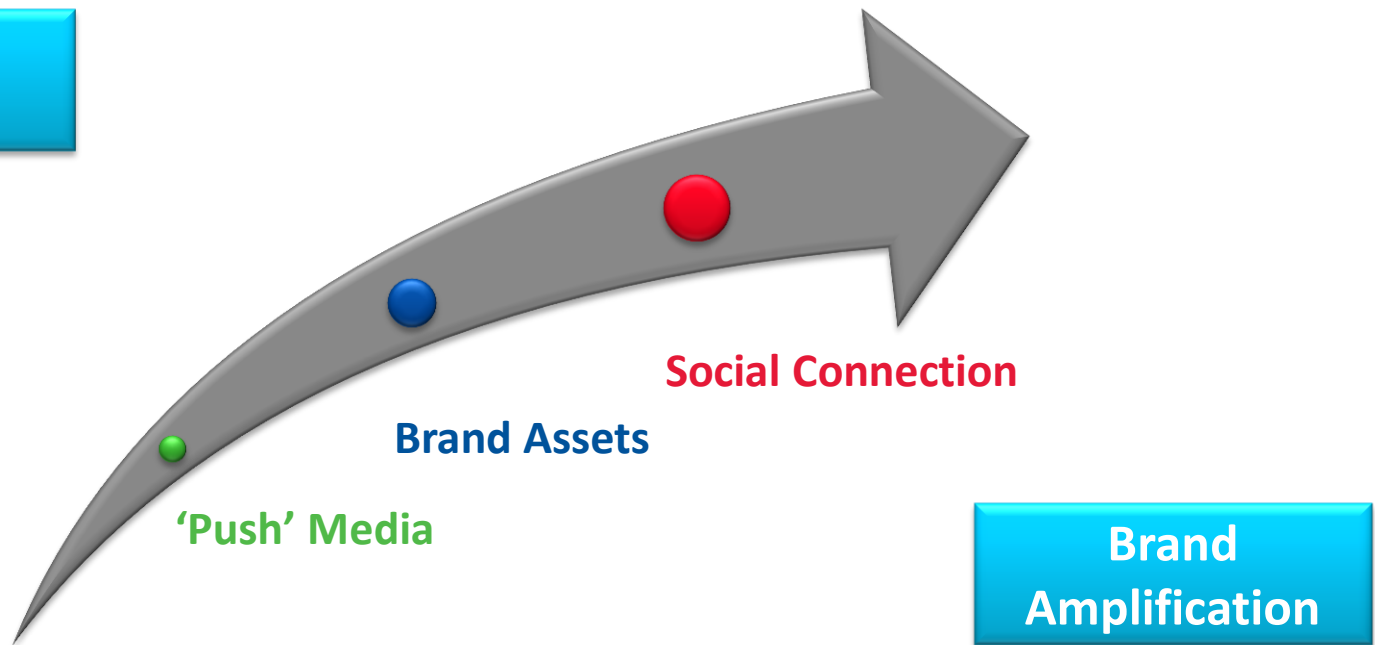
To one where we
were overwhelmed
by **Quantity** of choice



To today, where
Quality of choice
matters most

We understand the mechanics of the new communication landscape

**Brand
Discovery**



We use 'push' channels to enable people to discover brand assets and experiences and then distribute them in the new communications landscape

So we've re-framed the questions that media agencies have traditionally asked

How do I buy your attention?



how do I win your attention?

Where do I place a message?



how and where should we talk?

How many bursts?



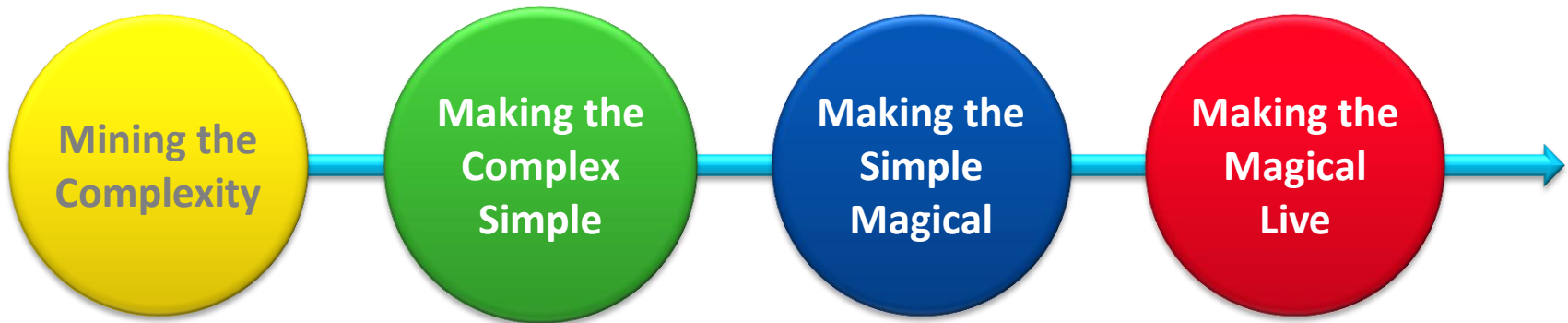
how can I keep the relationship fresh?

What reach and frequency?



how deep should I go with an individual consumer?

We've brought Data Experts and
Communications Planners together



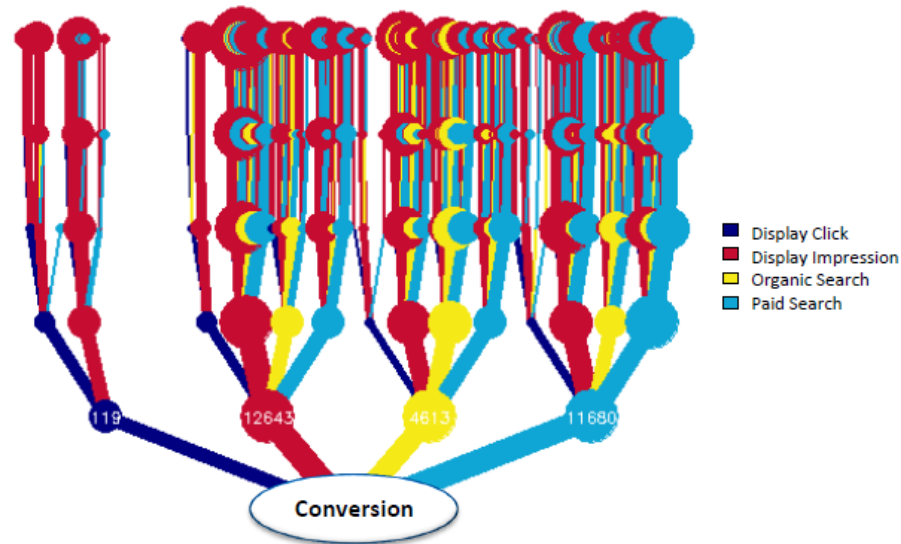
And then empowered them to create new types of solutions through a future-facing process that blends data and creativity at every point

We speak with smaller, better-defined audiences



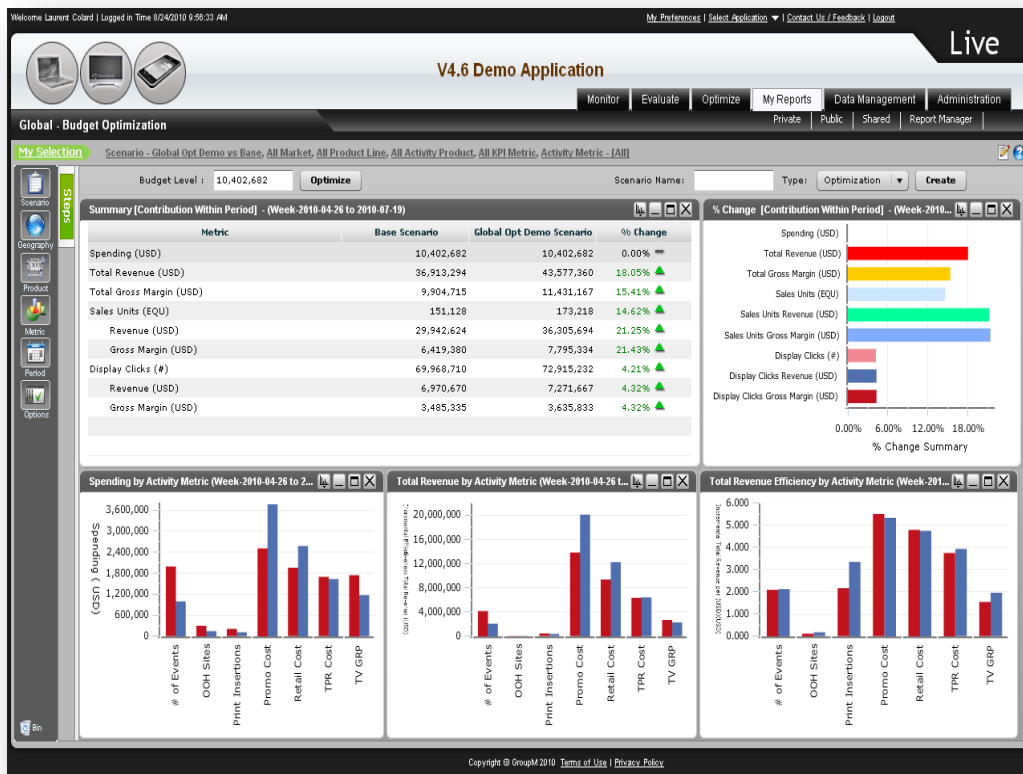
We marry richer data with new insight techniques to better understand tailored and defined audiences.

We understand how to use one element of communication to drive consumers to another, building depth of contact



Our award-winning attribution models tell us what to say when; how to sequence messages over time to build a deeper and richer conversation; and when to drive to purchase.

We continually monitor data that allows us to see the effects of our actions in real time



We are redefining agency timings. We set a long term vision for a brand and then plan organically, constantly adapting to actual consumer behaviour and real-time data.

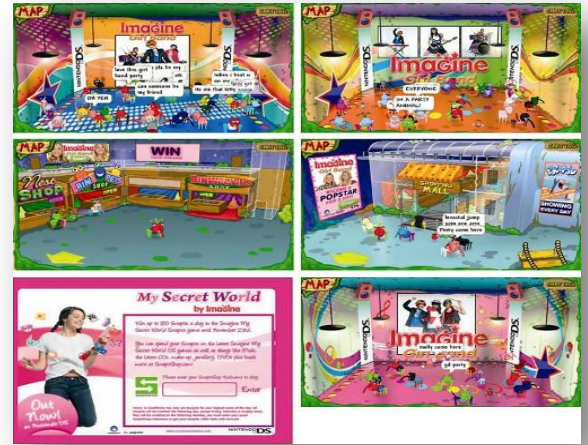
We create engaging ideas that invite participation



Spectacular street furniture for Fiat



World's first mobile brochure for Mercedes



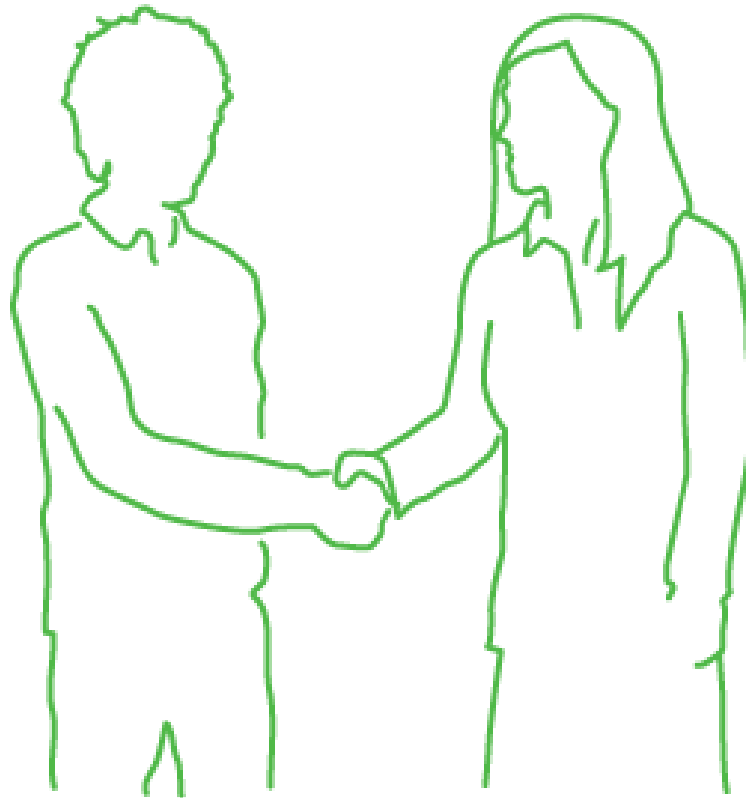
Social networking parties for Ubisoft

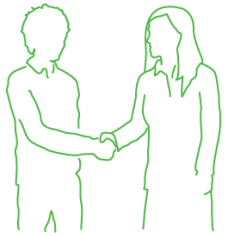
Not only that, we put an increased focus on engaging consumers that have already purchased



We turned India's biggest radio station into a real-time library of mobile downloadable tracks for Vodafone customers, rewarding them and encouraging them to purchase again and again.

At Maxus, we build deeper relationships between consumers and brands, creating, executing and quantifying communication that drives greater business value





we'd love to work with you

maxus

www.maxusglobal.com

Contact:

Nick Vale, Global Planning Director

nick.vale@maxusglobal.com

7th Floor, Lacon House, Theobald's Road, London, WC1X 8RW, UK

+44 (0) 20 7025 3900